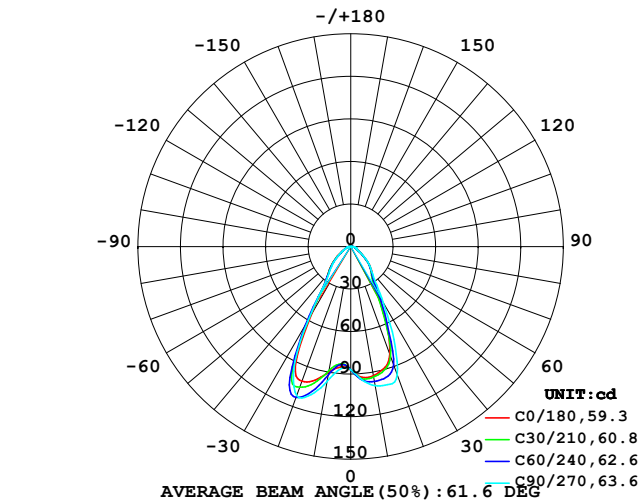


LUMINAIRE PHOTOMETRIC TEST REPORT

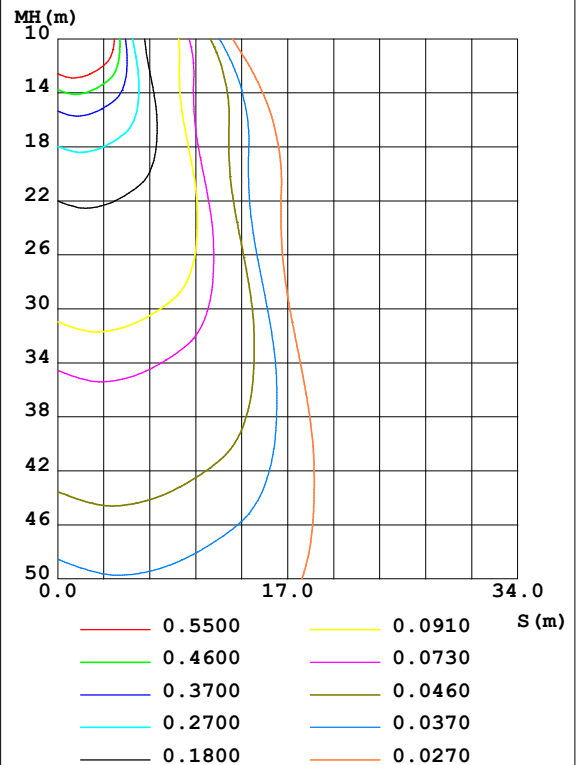
Test:U:24.00V I:0.064A P:1.54W PF:1.000 Freq:0Hz Lamp Flux:125.887x1 lm		
NAME: 52406-2700K	TYPE:	WEIGHT:
SPEC.:	DIM.:	SERIAL No.: 2025062307
MFR.:	SUR.:	Shielding Angle:

DATA OF LAMP		PHOTOMETRIC DATA Eff: 81.96 lm/W			
MODEL		I _{max} (cd)	114.7	S/MH (C0/180)	0.94
NOMINAL POWER (W)		LOR (%)	100.0	S/MH (C90/270)	0.94
RATED VOLTAGE (V)	24	TOTAL FLUX (lm)	125.89	η UP, DN (C0-180)	0.1, 48.6
NOMINAL FLUX (lm)	125.887	CIE CLASS	DIRECT	η UP, DN (C180-360)	0.0, 51.2
LAMPS INSIDE	1	η up (%)	0.2	CIBSE SHR NOM	0.75
TEST VOLTAGE (V)	24	η down (%)	99.8	CIBSE SHR MAX	0.80

LUMINOUS INTENSITY DISTRIBUTION DIAGRAM



C0 PLANE ISOLUX DIAGRAM (UNIT:lx)



C Range: 0 - 360DEG
C Interval: 15.0DEG
Test Speed: HIGH
Temperature: 25DEG
Operators: SENPU
Test Date: 2025-06-21

γ Range: 0 - 100DEG
γ Interval: 1.0DEG
Test System: EVERFINE GO-2000B_V1 SYSTEM V2.00.444
Humidity: 61%
Test Distance: 8.000m [K=1.0000]
Remarks:

ZONAL FLUX DIAGRAM

ZONAL FLUX DIAGRAM:

γ	C0	C45	C90	C135	C180	C225	C270	C315	γ	Φ zone	Φ total	%lum,lamp
10	92.42	94.99	99.62	95.90	89.94	90.73	96.57	96.40	0- 10	8.714	8.714	6.92,6.92
20	80.63	86.38	96.09	103.5	100.9	109.6	111.8	91.73	10- 20	27.85	36.57	29,29
30	36.40	38.40	46.29	57.19	56.19	61.46	60.36	44.73	20- 30	35.00	71.56	56.8,56.8
40	23.26	22.64	23.41	25.27	25.04	24.25	23.83	22.65	30- 40	20.36	91.92	73,73
50	14.06	14.17	14.49	15.68	15.30	14.16	14.13	13.11	40- 50	14.69	106.6	84.7,84.7
60	6.577	6.550	6.812	7.264	7.350	6.942	6.941	6.524	50- 60	9.153	115.8	92,92
70	3.976	3.990	4.027	3.764	3.833	3.767	3.641	3.942	60- 70	4.986	120.8	95.9,95.9
80	2.399	2.309	2.634	2.396	2.282	2.555	2.195	2.320	70- 80	3.282	124.0	98.5,98.5
90	0.6547	0.5575	0.7425	0.6266	0.4959	0.4635	0.3307	0.5497	80- 90	1.663	125.7	99.8,99.8
100	0.0959	0.0872	0.0784	0.0872	0	0.0087	0	0.0174	90-100	0.1891	125.9	100,100
110	0	0	0	0	0	0	0	0	100-110	0.0027	125.9	100,100
120	0	0	0	0	0	0	0	0	110-120	0	125.9	100,100
130	0	0	0	0	0	0	0	0	120-130	0	125.9	100,100
140	0	0	0	0	0	0	0	0	130-140	0	125.9	100,100
150	0	0	0	0	0	0	0	0	140-150	0	125.9	100,100
160	0	0	0	0	0	0	0	0	150-160	0	125.9	100,100
170	0	0	0	0	0	0	0	0	160-170	0	125.9	100,100
180	0	0	0	0	0	0	0	0	170-180	0	125.9	100,100
DEG	LUMINOUS INTENSITY:cd									UNIT:lm		

Conical surface Flux(90deg): 99.84 lm

%lum = 79.3%

%lamp = 79.3%

Conical surface Flux(120deg): 115.76 lm

%lum = 92.0%

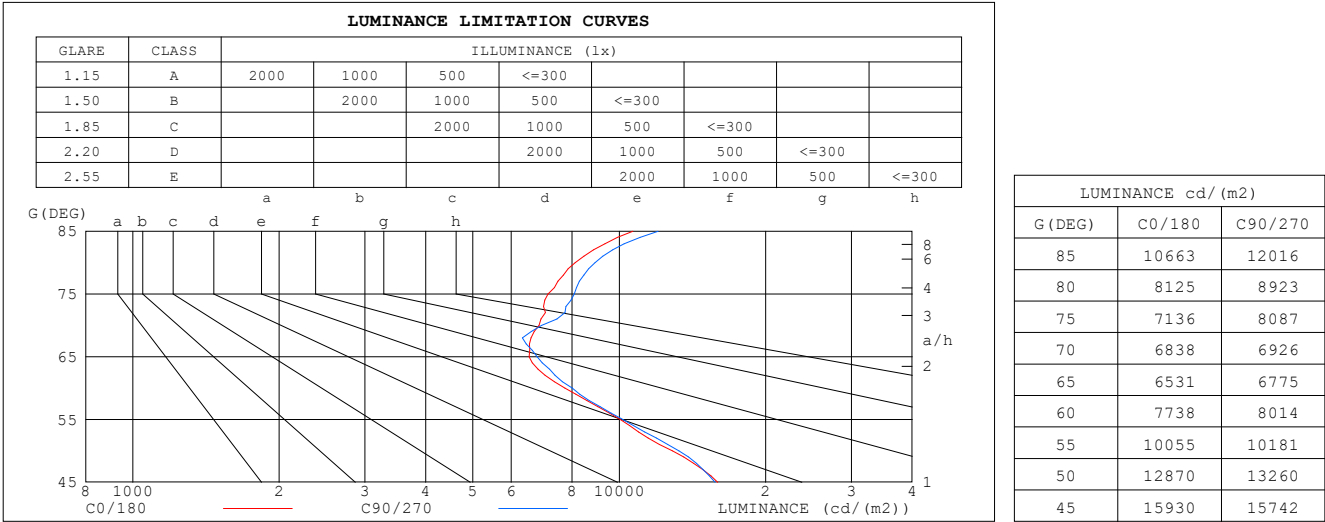
%lamp = 92.0%

C Range: 0 - 360DEG
 C Interval: 15.0DEG
 Test Speed: HIGH
 Temperature:25DEG
 Operators:SENPU
 Test Date:2025-06-21

γ Range: 0 - 100DEG
 γ Interval: 1.0DEG
 Test System:EVERFINE GO-2000B_V1 SYSTEM V2.00.444
 Humidity:61%
 Test Distance:8.000m [K=1.0000]
 Remarks:

LUMINANCE LIMITATION CURVES

Test:U:24.00V I:0.064A P:1.54W PF:1.000 Freq:0Hz Lamp Flux:125.887x1 lm		
NAME: 52406-2700K	TYPE:	WEIGHT:
SPEC.:	DIM.:	SERIAL No.: 2025062307
MFR.:	SUR.:	Shielding Angle:



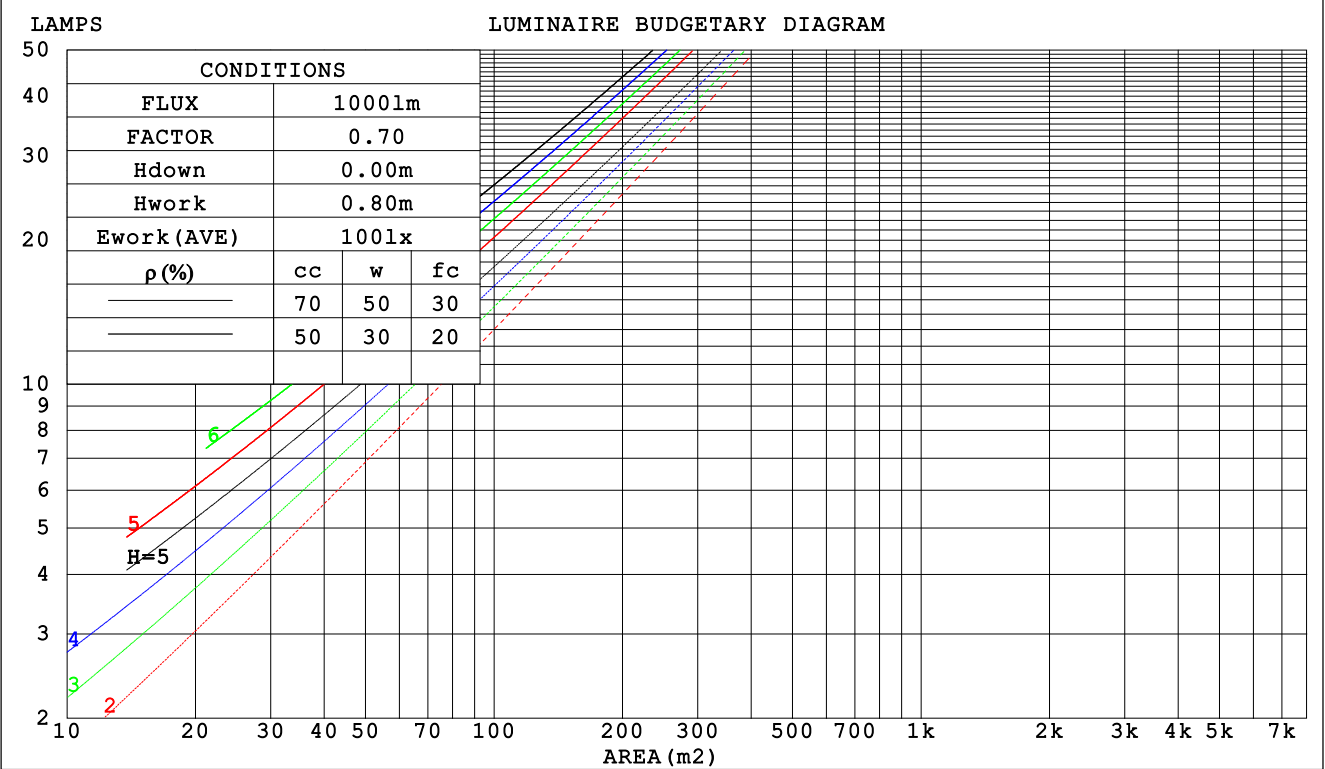
C Range: 0 - 360DEG
C Interval: 15.0DEG
Test Speed: HIGH
Temperature:25DEG
Operators:SENPU
Test Date:2025-06-21

γ Range: 0 - 100DEG
γ Interval: 1.0DEG
Test System:EVERFINE GO-2000B_V1 SYSTEM V2.00.444
Humidity:61%
Test Distance:8.000m [K=1.0000]
Remarks:

CU AND LUMINAIRE BUDGETARY ESTIMATE DIAGRAM

Test:U:24.00V I:0.064A P:1.54W PF:1.000 Freq:0Hz		
Lamp Flux:125.887x1 lm		
NAME: 52406-2700K	TYPE:	WEIGHT:
SPEC.:	DIM.:	SERIAL No.: 2025062307
MFR.:	SUR.:	Shielding Angle:

pcc	80%			70%			50%			30%			10%			0
pw	50%	30%	10%	50%	30%	10%	50%	30%	10%	50%	30%	10%	50%	30%	10%	0
pfc	20%			20%			20%			20%			20%			0
RCR	RCR:Room Cavity Ratio						Coefficients of Utilization(CU)									
0.0	1.19	1.19	1.19	1.16	1.16	1.16	1.11	1.11	1.11	1.06	1.06	1.06	1.02	1.02	1.02	.00
1.0	1.08	1.05	1.02	1.06	1.03	1.00	1.02	.99	.97	.98	.96	.94	.94	.93	.91	.89
2.0	.98	.93	.89	.96	.92	.88	.93	.89	.86	.90	.87	.84	.87	.84	.82	.80
3.0	.90	.83	.79	.88	.82	.78	.85	.81	.77	.83	.79	.75	.80	.77	.74	.72
4.0	.82	.76	.70	.81	.75	.70	.79	.73	.69	.77	.72	.68	.75	.71	.67	.66
5.0	.76	.69	.64	.75	.68	.63	.73	.67	.63	.71	.66	.62	.70	.65	.62	.60
6.0	.70	.63	.58	.70	.63	.58	.68	.62	.58	.66	.61	.57	.65	.60	.57	.55
7.0	.65	.58	.53	.65	.58	.53	.63	.57	.53	.62	.57	.53	.61	.56	.52	.51
8.0	.61	.54	.49	.60	.54	.49	.59	.53	.49	.58	.53	.49	.57	.52	.49	.47
9.0	.57	.50	.46	.57	.50	.46	.56	.50	.46	.55	.49	.45	.54	.49	.45	.44
10.0	.54	.47	.43	.53	.47	.43	.52	.47	.43	.52	.46	.42	.51	.46	.42	.41



C Range: 0 - 360DEG
C Interval: 15.0DEG
Test Speed: HIGH
Temperature:25DEG
Operators:SENPU
Test Date:2025-06-21

γ Range: 0 - 100DEG
γ Interval: 1.0DEG
Test System:EVERFINE GO-2000B_V1 SYSTEM V2.00.444
Humidity:61%
Test Distance:8.000m [K=1.0000]
Remarks:

WEC AND CCEC

Test:U:24.00V I:0.064A P:1.54W PF:1.000 Freq:0Hz Lamp Flux:125.887x1 lm		
NAME: 52406-2700K	TYPE:	WEIGHT:
SPEC.:	DIM.:	SERIAL No.: 2025062307
MFR.:	SUR.:	Shielding Angle:

pcc	80%			70%			50%			30%			10%			0	
pw	50%	30%	10%	50%	30%	10%	50%	30%	10%	50%	30%	10%	50%	30%	10%	0	
pfc	20%			20%			20%			20%			20%			0	
RCR	RCR:Room Cavity Ratio						Wall Exitance Coefficients (WEC)										
0.0																	
1.0	.232	.132	.042	.225	.128	.041	.212	.122	.039	.200	.115	.037	.189	.110	.035		
2.0	.218	.119	.037	.212	.117	.036	.201	.112	.035	.190	.107	.033	.181	.102	.032		
3.0	.204	.108	.032	.198	.106	.032	.189	.102	.031	.180	.099	.030	.172	.095	.029		
4.0	.191	.099	.029	.186	.097	.029	.178	.094	.028	.170	.091	.028	.163	.088	.027		
5.0	.179	.091	.026	.175	.090	.026	.168	.087	.026	.161	.085	.025	.154	.083	.025		
6.0	.169	.085	.024	.165	.083	.024	.159	.081	.024	.153	.079	.023	.147	.077	.023		
7.0	.159	.079	.022	.156	.078	.022	.150	.076	.022	.145	.074	.022	.140	.073	.021		
8.0	.151	.074	.021	.148	.073	.021	.143	.071	.020	.138	.070	.020	.133	.068	.020		
9.0	.143	.069	.019	.140	.068	.019	.136	.067	.019	.131	.066	.019	.127	.065	.019		
10.0	.136	.065	.018	.134	.065	.018	.129	.063	.018	.126	.062	.018	.122	.061	.018		

pcc	80%			70%			50%			30%			10%			0
pw	50%	30%	10%	50%	30%	10%	50%	30%	10%	50%	30%	10%	50%	30%	10%	0
pfc	20%			20%			20%			20%			20%			0
RCR	RCR:Room Cavity Ratio						Ceiling Cavity Exitance Coefficients (CCEC)									
0.0	.192	.192	.192	.164	.164	.164	.112	.112	.112	.064	.064	.064	.021	.021	.021	
1.0	.176	.158	.142	.151	.136	.122	.103	.093	.084	.059	.054	.049	.019	.017	.016	
2.0	.164	.133	.108	.140	.115	.094	.096	.079	.065	.055	.046	.038	.018	.015	.012	
3.0	.153	.115	.085	.131	.099	.074	.090	.069	.052	.052	.040	.030	.017	.013	.010	
4.0	.144	.101	.068	.123	.087	.059	.085	.061	.042	.049	.036	.025	.016	.012	.008	
5.0	.135	.090	.056	.116	.078	.049	.080	.054	.034	.046	.032	.020	.015	.010	.007	
6.0	.128	.081	.047	.110	.070	.041	.076	.049	.029	.044	.029	.017	.014	.009	.006	
7.0	.122	.074	.040	.105	.064	.035	.072	.045	.025	.042	.026	.015	.014	.009	.005	
8.0	.116	.067	.034	.100	.059	.030	.069	.041	.021	.040	.024	.013	.013	.008	.004	
9.0	.110	.062	.030	.095	.054	.026	.066	.038	.019	.038	.022	.011	.012	.007	.004	
10.0	.105	.058	.027	.091	.050	.023	.063	.035	.017	.037	.021	.010	.012	.007	.003	

C Range: 0 - 360DEG
 C Interval: 15.0DEG
 Test Speed: HIGH
 Temperature: 25DEG
 Operators: SENPU
 Test Date: 2025-06-21

γ Range: 0 - 100DEG
 γ Interval: 1.0DEG
 Test System: EVERFINE GO-2000B_V1 SYSTEM V2.00.444
 Humidity: 61%
 Test Distance: 8.000m [K=1.0000]
 Remarks:

UGR(Unified Glare Rating) Table

Test:U:24.00V I:0.064A P:1.54W PF:1.000 Freq:0Hz Lamp Flux:125.887x1 lm										
NAME: 52406-2700K					TYPE:			WEIGHT:		
SPEC.:					DIM.:			SERIAL No.: 2025062307		
MFR.:					SUR.:			Shielding Angle:		
ceiling/cavity	0.7	0.7	0.5	0.5	0.3	0.7	0.7	0.5	0.5	0.3
walls	0.5	0.3	0.5	0.3	0.3	0.5	0.3	0.5	0.3	0.3
working plane	0.2	0.2	0.2	0.2	0.2	0.2	0.2	0.2	0.2	0.2
Room dimensions	Viewed crosswise					Viewed endwise				
x = 2H y = 2H	18.5	19.7	18.7	19.8	20.0	18.7	19.8	18.9	20.0	20.2
3H	19.2	20.3	19.5	20.5	20.7	19.4	20.5	19.7	20.7	20.9
4H	19.7	20.7	20.0	20.9	21.2	19.9	21.0	20.2	21.2	21.4
6H	20.2	21.2	20.5	21.4	21.7	20.5	21.5	20.8	21.7	22.0
8H	20.5	21.4	20.8	21.7	21.9	20.8	21.7	21.1	22.0	22.3
12H	20.7	21.6	21.1	21.9	22.2	21.1	22.0	21.5	22.3	22.6
4H 2H	18.7	19.7	19.0	19.9	20.2	18.8	19.9	19.1	20.1	20.3
3H	19.7	20.6	20.0	20.9	21.1	19.8	20.7	20.2	21.0	21.3
4H	20.3	21.1	20.7	21.4	21.8	20.6	21.4	20.9	21.7	22.0
6H	21.0	21.7	21.4	22.1	22.4	21.4	22.1	21.7	22.4	22.8
8H	21.4	22.1	21.8	22.4	22.8	21.8	22.4	22.2	22.8	23.2
12H	21.8	22.4	22.2	22.8	23.2	22.2	22.8	22.6	23.2	23.6
8H 4H	20.6	21.3	21.0	21.6	22.0	20.8	21.5	21.2	21.8	22.2
6H	21.5	22.0	21.9	22.4	22.9	21.8	22.4	22.2	22.8	23.2
8H	22.0	22.5	22.5	22.9	23.4	22.3	22.8	22.8	23.2	23.7
12H	22.5	22.9	23.0	23.4	23.9	22.9	23.3	23.4	23.8	24.3
12H 4H	20.6	21.2	21.0	21.6	22.0	20.8	21.4	21.3	21.8	22.2
6H	21.6	22.1	22.1	22.5	23.0	21.9	22.4	22.4	22.8	23.3
8H	22.2	22.6	22.6	23.0	23.5	22.5	22.9	23.0	23.4	23.8
Variations with the observer position at spacings(CIE Pub.117):										
S = 1.0H	+ 0.4 / - 0.4					+ 0.4 / - 0.4				
1.5H	+ 0.3 / - 0.2					+ 0.2 / - 0.3				
2.0H	+ 1.0 / - 0.6					+ 0.9 / - 0.6				

CIE Pub.117, 125.9 lm Total Lamp Luminous Flux Corrected ($8\log(F/F_0) = -7.2$)
Area: 0.0017 m²

C Range: 0 - 360DEG
C Interval: 15.0DEG
Test Speed: HIGH
Temperature:25DEG
Operators:SENPU
Test Date:2025-06-21

γ Range: 0 - 100DEG
 γ Interval: 1.0DEG
Test System:EVERFINE GO-2000B_V1 SYSTEM V2.00.444
Humidity:61%
Test Distance:8.000m [K=1.0000]
Remarks:

UTILIZATION FACTORS TABLE

Test:U:24.00V I:0.064A P:1.54W PF:1.000 Freq:0Hz Lamp Flux:125.887x1 lm		
NAME: 52406-2700K	TYPE:	WEIGHT:
SPEC.:	DIM.:	SERIAL No.: 2025062307
MFR.:	SUR.:	Shielding Angle:

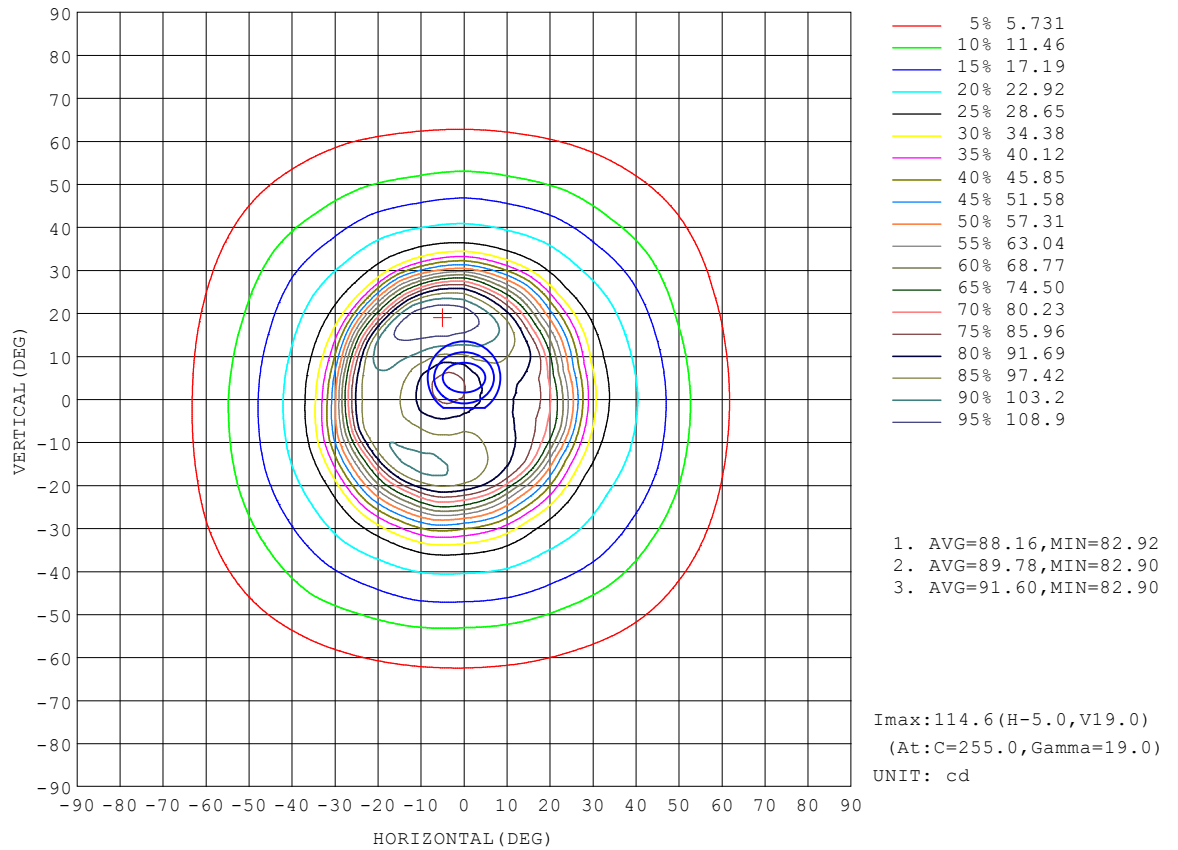
REFLECTANCE										
Ceiling	0.8	0.8	0.8	0.7	0.7	0.7	0.5	0.5	0.5	0
Walls	0.7	0.5	0.3	0.7	0.5	0.3	0.7	0.5	0.3	0
Working plane	0.2	0.2	0.2	0.2	0.2	0.2	0.2	0.2	0.2	0
ROOM INDEX	UTILIZATION FACTORS (PERCENT) $k(RI) \times RCR = 5$									
$k = 0.60$	75	66	61	74	66	61	73	65	61	56
0.80	83	75	70	83	75	70	81	74	69	64
1.00	90	82	77	89	81	77	87	82	76	71
1.25	95	88	83	94	87	82	92	86	82	76
1.50	99	92	87	97	91	87	95	90	86	80
2.00	103	97	93	101	96	92	98	94	90	84
2.50	106	100	96	104	99	95	100	96	93	86
3.00	108	103	99	106	101	98	102	99	96	89
4.00	111	107	103	108	105	102	104	102	99	91
5.00	112	109	106	110	107	104	106	103	101	93
ROOM INDEX	UF (total)									Direct
According to DIN EN 13032-2 2004			Suspended					SHRNOM = 1.25		

C Range: 0 - 360DEG
 C Interval: 15.0DEG
 Test Speed: HIGH
 Temperature: 25DEG
 Operators: SENPU
 Test Date: 2025-06-21

γ Range: 0 - 100DEG
 γ Interval: 1.0DEG
 Test System: EVERFINE GO-2000B_V1 SYSTEM V2.00.444
 Humidity: 61%
 Test Distance: 8.000m [K=1.0000]
 Remarks:

ISOCANDELA DIAGRAM

Test:U:24.00V I:0.064A P:1.54W PF:1.000 Freq:0Hz Lamp Flux:125.887x1 lm		
NAME: 52406-2700K	TYPE:	WEIGHT:
SPEC.:	DIM.:	SERIAL No.: 2025062307
MFR.:	SUR.:	Shielding Angle:

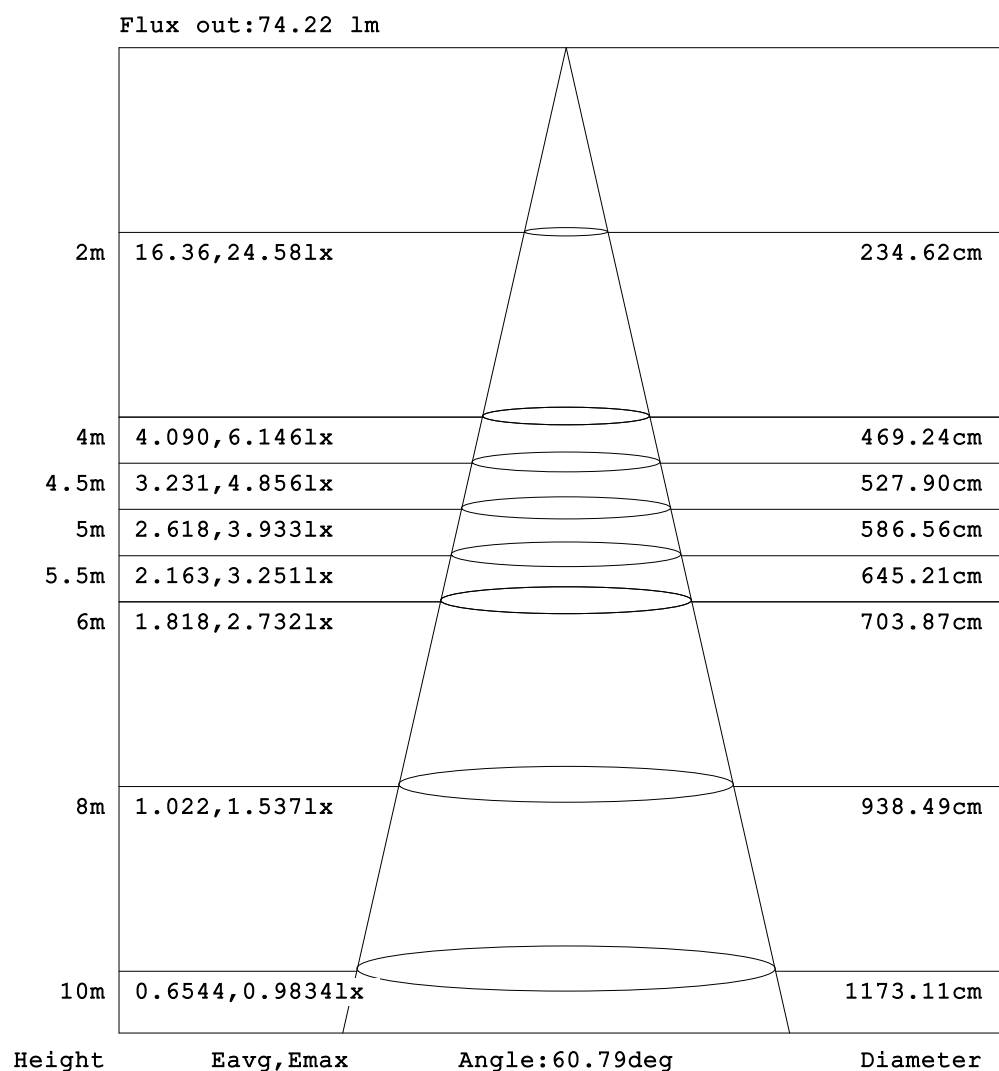


C Range: 0 - 360DEG
C Interval: 15.0DEG
Test Speed: HIGH
Temperature:25DEG
Operators:SENPU
Test Date:2025-06-21

γ Range: 0 - 100DEG
 γ Interval: 1.0DEG
Test System:EVERFINE GO-2000B_V1 SYSTEM V2.00.444
Humidity:61%
Test Distance:8.000m [K=1.0000]
Remarks:

AAI Figure

Test:U:24.00V I:0.064A P:1.54W PF:1.000 Freq:0Hz Lamp Flux:125.887x1 lm		
NAME: 52406-2700K	TYPE:	WEIGHT:
SPEC.:	DIM.:	SERIAL No.: 2025062307
MFR.:	SUR.:	Shielding Angle:



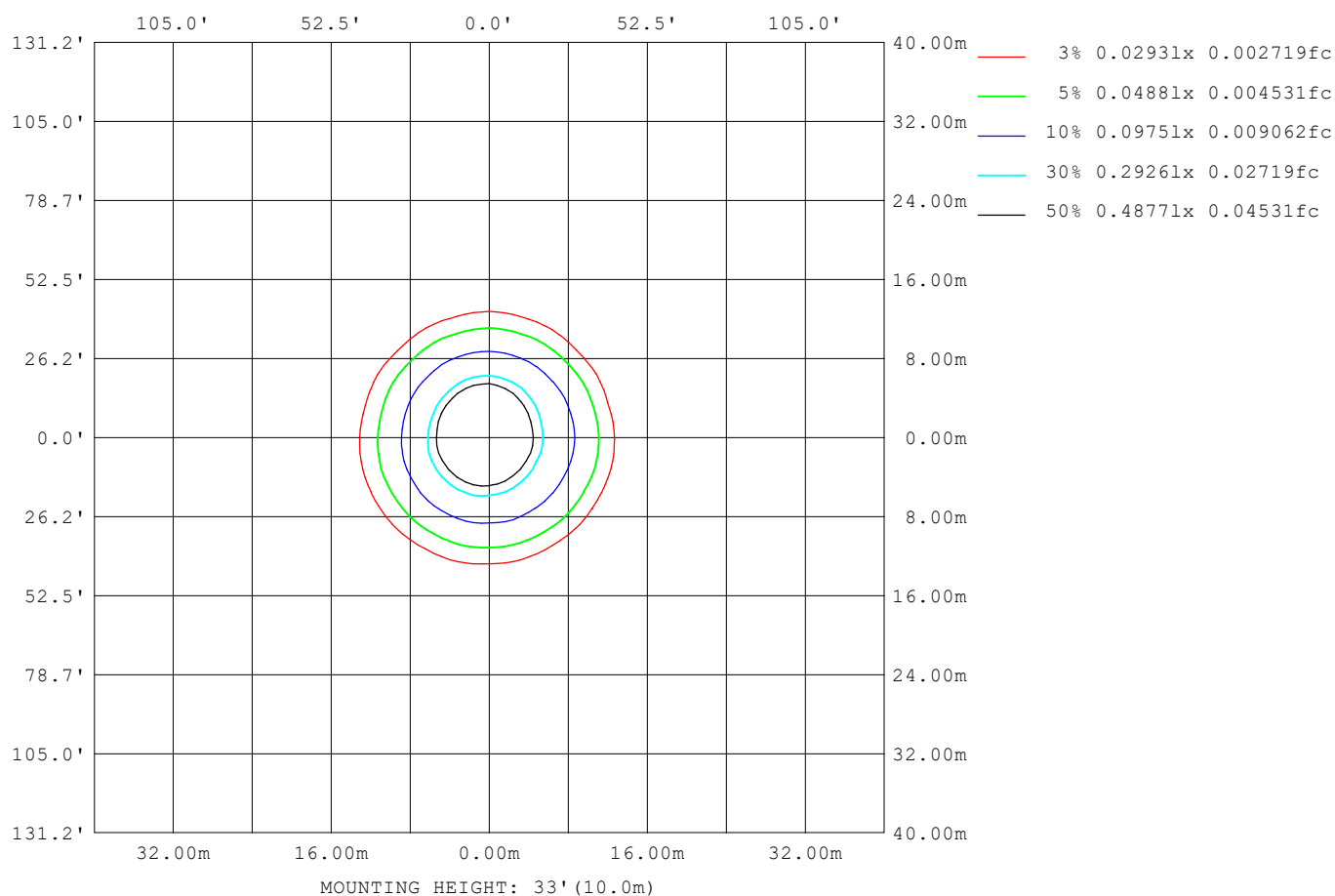
Note: The Curves indicate the illuminated area and the average illumination when the luminaire is at different distance.

C Range: 0 - 360DEG
C Interval: 15.0DEG
Test Speed: HIGH
Temperature: 25DEG
Operators: SENPU
Test Date: 2025-06-21

γ Range: 0 - 100DEG
γ Interval: 1.0DEG
Test System: EVERFINE GO-2000B_V1 SYSTEM V2.00.444
Humidity: 61%
Test Distance: 8.000m [K=1.0000]
Remarks:

ISOLUX DIAGRAM

Test:U:24.00V I:0.064A P:1.54W PF:1.000 Freq:0Hz Lamp Flux:125.887x1 lm		
NAME: 52406-2700K	TYPE:	WEIGHT:
SPEC.:	DIM.:	SERIAL No.: 2025062307
MFR.:	SUR.:	Shielding Angle:



C Range: 0 - 360DEG
C Interval: 15.0DEG
Test Speed: HIGH
Temperature:25DEG
Operators:SENPU
Test Date:2025-06-21

γ Range: 0 - 100DEG
 γ Interval: 1.0DEG
 γ Test System:EVERFINE GO-2000B_V1 SYSTEM V2.00.444
Humidity:61%
Test Distance:8.000m [K=1.0000]
Remarks:

LED Avg.L Report

Test:U:24.00V I:0.064A P:1.54W PF:1.000 Freq:0Hz Lamp Flux:125.887x1 lm		
NAME: 52406-2700K	TYPE:	WEIGHT:
SPEC.:	DIM.:	SERIAL No.: 2025062307
MFR.:	SUR.:	Shielding Angle:

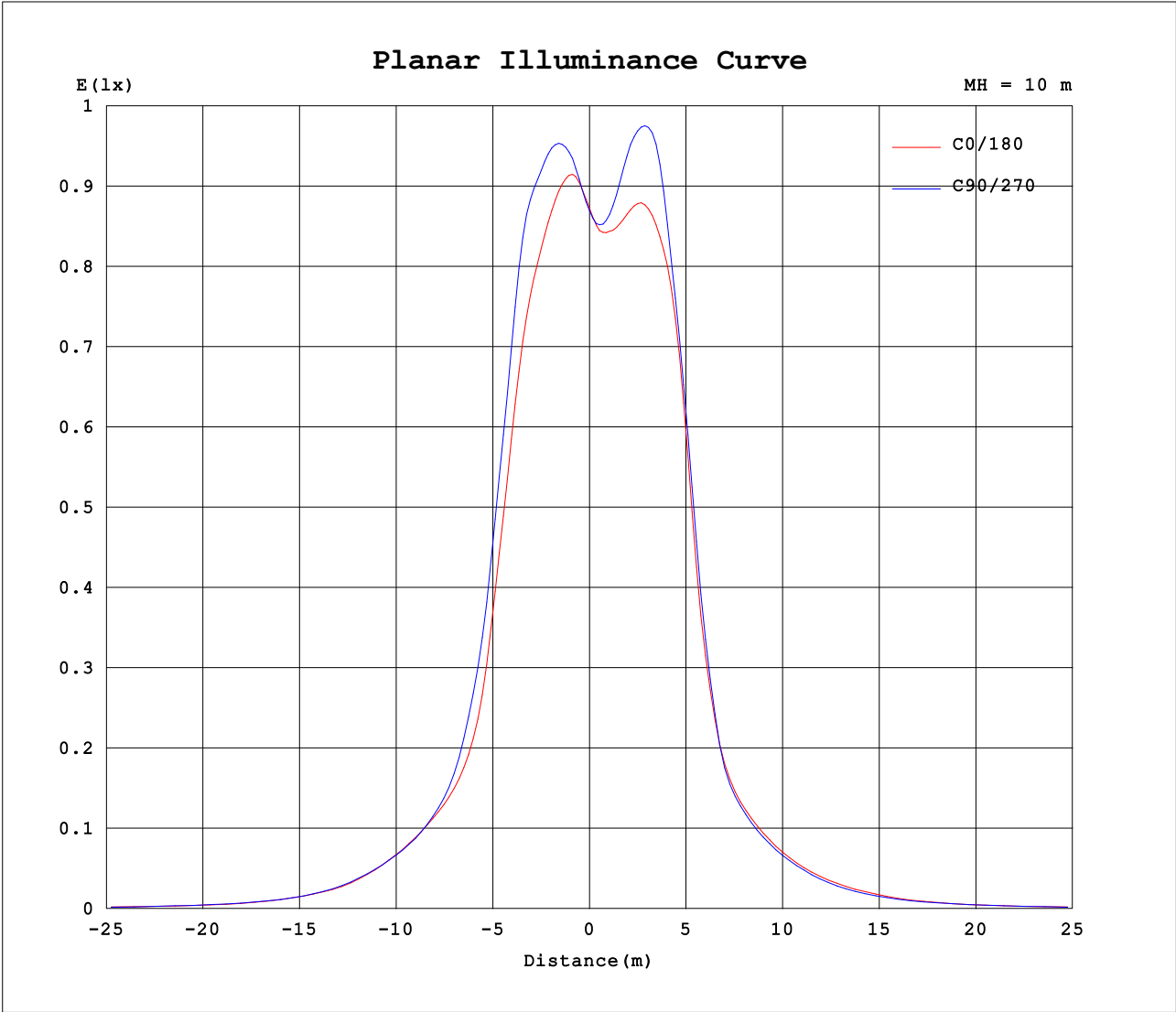
AvgL	cd/m2
L_0~180 (65) av	6836
L_0~180 (75) av	6884
L_0~180 (85) av	10824
L_90~270 (65) av	6837
L_90~270 (75) av	7301
L_90~270 (85) av	10765
L_45 (65) av	6752
L_45 (75) av	6879
L_45 (85) av	10619

Standard: GB/T 29293-2012

C Range: 0 - 360DEG
C Interval: 15.0DEG
Test Speed: HIGH
Temperature:25DEG
Operators:SENPU
Test Date:2025-06-21

γ Range: 0 - 100DEG
γ Interval: 1.0DEG
Test System:EVERFINE GO-2000B_V1 SYSTEM V2.00.444
Humidity:61%
Test Distance:8.000m [K=1.0000]
Remarks:

Planar Illuminance Curve



C Range: 0 - 360DEG
C Interval: 15.0DEG
Test Speed: HIGH
Temperature:25DEG
Operators:SENPU
Test Date:2025-06-21

γ Range: 0 - 100DEG
 γ Interval: 1.0DEG
Test System:EVERFINE GO-2000B_V1 SYSTEM V2.00.444
Humidity:61%
Test Distance:8.000m [K=1.0000]
Remarks:

LUMINOUS DISTRIBUTION INTENSITY DATA

Test:U:24.00V I:0.064A P:1.54W PF:1.000 Freq:0Hz Lamp Flux:125.887x1 lm		
NAME: 52406-2700K	TYPE:	WEIGHT:
SPEC.:	DIM.:	SERIAL No.: 2025062307
MFR.:	SUR.:	Shielding Angle:

Table--1

UNIT: cd

C (DEG) γ (DEG)	0	15	30	45	60	75	90	105	120	135	150	165	180	195	210	225	240	255	270
0	87.2	86.9	87.0	86.6	86.9	86.7	87.0	87.0	87.1	87.3	87.4	87.8	87.2	86.9	87.0	86.6	86.9	86.7	87.0
5	92.5	93.0	93.6	94.0	94.6	94.4	94.5	93.3	92.1	90.1	88.5	86.4	85.2	83.9	83.0	83.2	83.7	85.1	86.7
10	92.4	92.6	93.4	95.0	96.6	98.3	99.6	99.1	98.1	95.9	93.9	91.0	89.9	89.4	88.9	90.7	92.0	95.3	96.6
15	89.3	89.2	90.6	93.1	95.7	98.9	101	103	103	102	100	97.8	97.6	98.0	99.5	103	106	109	108
20	80.6	80.5	82.3	86.4	88.8	92.6	96.1	100	103	103	103	102	101	102	105	110	113	115	112
25	59.6	59.6	57.5	59.9	61.8	67.3	72.4	78.3	80.0	84.1	87.6	93.6	92.7	93.8	98.6	99.8	102	98.6	95.5
30	36.4	36.0	36.0	38.4	40.3	44.0	46.3	51.5	53.7	57.2	57.9	60.2	56.2	56.3	60.3	61.5	64.3	61.7	60.4
35	27.3	26.7	26.1	26.8	27.5	29.5	30.7	33.2	33.5	34.6	34.0	35.2	32.9	32.1	31.6	31.0	32.4	32.3	32.0
40	23.3	22.9	22.3	22.6	22.6	23.3	23.4	24.2	24.5	25.3	25.1	25.5	25.0	24.6	24.6	24.3	24.5	24.0	23.8
45	19.1	19.1	18.7	18.8	18.5	18.9	18.9	19.5	19.6	20.3	20.2	20.5	20.0	19.5	19.6	19.0	19.3	18.7	18.8
50	14.1	14.1	13.8	14.2	14.1	14.4	14.5	15.2	15.2	15.7	15.6	15.8	15.3	14.8	15.0	14.2	14.3	13.9	14.1
55	9.80	9.77	9.46	9.64	9.53	9.89	9.93	10.3	10.6	11.6	11.4	11.6	11.3	10.5	10.3	9.89	10.2	9.82	10.0
60	6.58	6.54	6.41	6.55	6.55	6.76	6.81	6.93	7.02	7.26	7.39	7.75	7.35	7.06	7.04	6.94	7.13	6.94	6.94
65	4.69	4.59	4.62	4.57	4.68	4.79	4.87	4.92	4.99	5.06	5.22	5.31	5.13	5.08	5.08	5.07	5.10	5.01	4.96
70	3.98	3.90	3.95	3.99	4.08	4.16	4.03	3.77	3.75	3.76	3.94	3.98	3.83	3.90	3.77	3.77	3.74	3.71	3.64
75	3.14	3.07	3.12	3.12	3.31	3.39	3.56	3.31	3.03	2.88	3.01	3.05	2.92	3.03	2.90	3.02	3.14	2.94	2.87
80	2.40	2.31	2.36	2.31	2.48	2.53	2.63	2.59	2.53	2.40	2.45	2.38	2.28	2.54	2.50	2.55	2.38	2.30	2.19
85	1.58	1.51	1.54	1.50	1.61	1.64	1.78	1.69	1.78	1.68	1.79	1.77	1.63	1.80	1.67	1.63	1.53	1.50	1.41
90	0.65	0.58	0.63	0.56	0.66	0.65	0.74	0.64	0.70	0.63	0.67	0.63	0.50	0.54	0.43	0.46	0.38	0.42	0.33
95	0.14	0.10	0.09	0.09	0.11	0.09	0.11	0.07	0.10	0.09	0.09	0.09	0.00	0.03	0.02	0.04	0.01	0.03	0.00
100	0.10	0.10	0.09	0.09	0.09	0.09	0.08	0.07	0.09	0.09	0.09	0.09	0.00	0.02	0.02	0.01	0.01	0.02	0.00
105	0.00	0.00	0.00	0.00	0.00	0.00	0.00	0.00	0.00	0.00	0.00	0.00	0.00	0.00	0.00	0.00	0.00	0.00	0.00
110	0.00	0.00	0.00	0.00	0.00	0.00	0.00	0.00	0.00	0.00	0.00	0.00	0.00	0.00	0.00	0.00	0.00	0.00	0.00
115	0.00	0.00	0.00	0.00	0.00	0.00	0.00	0.00	0.00	0.00	0.00	0.00	0.00	0.00	0.00	0.00	0.00	0.00	0.00
120	0.00	0.00	0.00	0.00	0.00	0.00	0.00	0.00	0.00	0.00	0.00	0.00	0.00	0.00	0.00	0.00	0.00	0.00	0.00
125	0.00	0.00	0.00	0.00	0.00	0.00	0.00	0.00	0.00	0.00	0.00	0.00	0.00	0.00	0.00	0.00	0.00	0.00	0.00
130	0.00	0.00	0.00	0.00	0.00	0.00	0.00	0.00	0.00	0.00	0.00	0.00	0.00	0.00	0.00	0.00	0.00	0.00	0.00
135	0.00	0.00	0.00	0.00	0.00	0.00	0.00	0.00	0.00	0.00	0.00	0.00	0.00	0.00	0.00	0.00	0.00	0.00	0.00
140	0.00	0.00	0.00	0.00	0.00	0.00	0.00	0.00	0.00	0.00	0.00	0.00	0.00	0.00	0.00	0.00	0.00	0.00	0.00
145	0.00	0.00	0.00	0.00	0.00	0.00	0.00	0.00	0.00	0.00	0.00	0.00	0.00	0.00	0.00	0.00	0.00	0.00	0.00
150	0.00	0.00	0.00	0.00	0.00	0.00	0.00	0.00	0.00	0.00	0.00	0.00	0.00	0.00	0.00	0.00	0.00	0.00	0.00
155	0.00	0.00	0.00	0.00	0.00	0.00	0.00	0.00	0.00	0.00	0.00	0.00	0.00	0.00	0.00	0.00	0.00	0.00	0.00
160	0.00	0.00	0.00	0.00	0.00	0.00	0.00	0.00	0.00	0.00	0.00	0.00	0.00	0.00	0.00	0.00	0.00	0.00	0.00
165	0.00	0.00	0.00	0.00	0.00	0.00	0.00	0.00	0.00	0.00	0.00	0.00	0.00	0.00	0.00	0.00	0.00	0.00	0.00
170	0.00	0.00	0.00	0.00	0.00	0.00	0.00	0.00	0.00	0.00	0.00	0.00	0.00	0.00	0.00	0.00	0.00	0.00	0.00
175	0.00	0.00	0.00	0.00	0.00	0.00	0.00	0.00	0.00	0.00	0.00	0.00	0.00	0.00	0.00	0.00	0.00	0.00	0.00
180	0.00	0.00	0.00	0.00	0.00	0.00	0.00	0.00	0.00	0.00	0.00	0.00	0.00	0.00	0.00	0.00	0.00	0.00	0.00

C Range: 0 - 360DEG
C Interval: 15.0DEG
Test Speed: HIGH
Temperature:25DEG
Operators:SENPU
Test Date:2025-06-21

γ Range: 0 - 100DEG
γ Interval: 1.0DEG
Test System:EVERFINE GO-2000B_V1 SYSTEM V2.00.444
Humidity:61%
Test Distance:8.000m [K=1.0000]
Remarks:

LUMINOUS DISTRIBUTION INTENSITY DATA

Test:U:24.00V I:0.064A P:1.54W PF:1.000 Freq:0Hz Lamp Flux:125.887x1 lm		
NAME: 52406-2700K	TYPE:	WEIGHT:
SPEC.:	DIM.:	SERIAL No.: 2025062307
MFR.:	SUR.:	Shielding Angle:

Table--2

UNIT: cd

C (DEG) γ (DEG)	285	300	315	330	345													
0	87.0	87.1	87.3	87.4	87.8													
5	88.8	90.1	91.4	91.8	92.4													
10	98.4	97.3	96.4	94.6	93.0													
15	106	102	97.6	94.1	89.9													
20	106	99.3	91.7	87.4	81.0													
25	86.4	77.6	68.4	63.7	58.1													
30	55.0	51.7	44.7	40.9	36.5													
35	30.3	29.5	28.0	27.9	27.3													
40	23.3	23.3	22.7	23.0	22.9													
45	18.4	18.5	18.0	18.5	18.6													
50	13.5	13.6	13.1	13.5	13.3													
55	9.66	9.79	9.42	9.61	9.31													
60	6.77	6.73	6.52	6.51	6.32													
65	4.88	4.80	4.70	4.66	4.51													
70	3.76	3.89	3.94	3.87	3.91													
75	3.09	3.04	3.10	3.01	3.06													
80	2.34	2.30	2.32	2.24	2.27													
85	1.51	1.46	1.48	1.39	1.41													
90	0.48	0.44	0.55	0.45	0.54													
95	0.06	0.01	0.04	0.02	0.03													
100	0.02	0.00	0.02	0.02	0.03													
105	0.00	0.00	0.00	0.00	0.00													
110	0.00	0.00	0.00	0.00	0.00													
115	0.00	0.00	0.00	0.00	0.00													
120	0.00	0.00	0.00	0.00	0.00													
125	0.00	0.00	0.00	0.00	0.00													
130	0.00	0.00	0.00	0.00	0.00													
135	0.00	0.00	0.00	0.00	0.00													
140	0.00	0.00	0.00	0.00	0.00													
145	0.00	0.00	0.00	0.00	0.00													
150	0.00	0.00	0.00	0.00	0.00													
155	0.00	0.00	0.00	0.00	0.00													
160	0.00	0.00	0.00	0.00	0.00													
165	0.00	0.00	0.00	0.00	0.00													
170	0.00	0.00	0.00	0.00	0.00													
175	0.00	0.00	0.00	0.00	0.00													
180	0.00	0.00	0.00	0.00	0.00													

C Range: 0 - 360DEG
C Interval: 15.0DEG
Test Speed: HIGH
Temperature:25DEG
Operators:SENPU
Test Date:2025-06-21

γ Range: 0 - 100DEG
γ Interval: 1.0DEG
Test System:EVERFINE GO-2000B_V1 SYSTEM V2.00.444
Humidity:61%
Test Distance:8.000m [K=1.0000]
Remarks: